



Whitmore Place, Coventry, CV6

£1,350 PCM

LOCATION, TRAVEL & COMMUNITY

Welcome to Whitmore Place, a development offering homes to rent in the sought-after residential neighbourhood of Holbrooks, just 2.5 miles north of Coventry city centre.

Embrace picturesque green open spaces within walking distance, a variety of nearby schools, and an array of shops and facilities within a couple of miles. Additionally, the proximity to Birmingham, Nuneaton, Rugby, and Royal Leamington Spa, coupled with an excellent road network including the M6, M40, and M42, ensures easy access to surrounding areas - making Whitmore Place an ideal choice to put down roots!

EDUCATION & SCHOOLS NEARBY

The area provides excellent opportunities for children aged 4-18, with a range of schools ranging from Kindergartens all the way up to Primary schools all within 2 miles of the site. Making the school run quick and convenient.

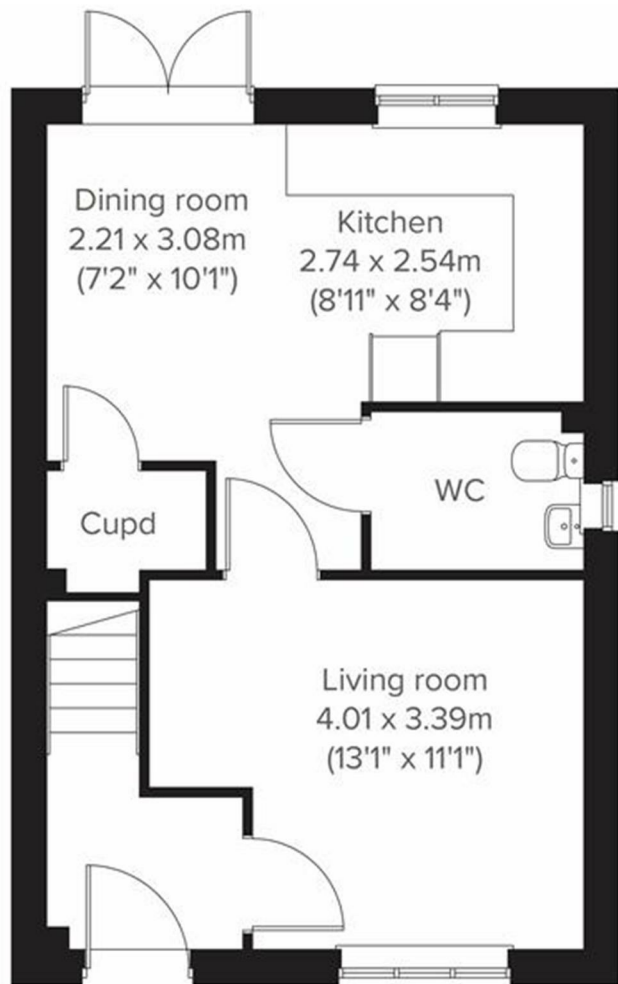
ABOUT YOUR HOME - THE DANBURY

Welcome to Whitmore Place in Coventry! This stunning detached house is a gem waiting to be discovered.

Tailored to fit a contemporary lifestyle, the three-bedroom Danbury presents a modern open-plan kitchen/dining room with direct access to the garden. Its spacious front-aspect living room is perfectly suited for entertaining.



16 Firecrest Close, Coventry, CV6 4RB



Energy Efficiency Rating

Source	Efficiency Rating	CO ₂ Rating (g/kWh)
Very energy efficient - lower running costs	A	100 (24kWh)
Energy efficient	B	181 (41kWh)
Efficient	C	269 (60kWh)
Standard	D	356 (81kWh)
Below standard	E	444 (100kWh)
Below standard	F	531 (119kWh)
Not energy efficient - higher running costs	G	619 (138kWh)

Environmental Impact (CO₂) Rating

Source	CO ₂ Rating (g/kWh)	Efficiency Rating
Very environmentally friendly - lower CO ₂ emissions	100 (24kWh)	A
Environmentally friendly	181 (41kWh)	B
Standard	269 (60kWh)	C
Below standard	356 (81kWh)	D
Below standard	444 (100kWh)	E
Below standard	531 (119kWh)	F
Not environmentally friendly - higher CO ₂ emissions	619 (138kWh)	G